



TRIMMERS

Nobody knows what to look for in a Trimmer better than Honda. When you work with your equipment day in, day out, all season long, you know the kind of features that make a machine you can count on. And those are the features designed into every Honda Trimmer. Like all Honda products, they're dependable, durable, and powerful.

The Honda Mini 4-strokes have a much broader torque curve than equivalent 2-stroke engines. This allows operation at lower rpm for a softer exhaust note, superb fuel efficiency and less vibration.

As well, Honda accessories are available to compliment our Trimmers. Various sizes of trimmer heads, trimmer line and barrier kits are available for your intended applications.

SUPPORTING A BETTER ENVIRONMENT...

As an innovator in engine technology, Honda takes its responsibility to the environment seriously. Honda Trimmers are powered by fuel-efficient 4-stroke engines that don't mix oil and gas, run with low emissions and are exceptionally quiet. At Honda, we're always thinking of better ways to get the job done in harmony with the world we live in.



BARRIER KITS AND BLADES

Unit	Metal Blades (1-inch arbor)	Part Number	Requires Barrier Kit
UMK422	3 tooth, 9" grass/weed blade	72511-VF9-A02	06631-VF9-C10 (for 9" blades)
	4 tooth, 9" grass/weed blade	72511-VF9-A00AH	
	8 tooth, 9" weed/brush blade	72511-VF9-003	
	24tooth, 9" weed/brush blade	72511-VF9-E00AH	
UMK431	3 tooth, 10" grass/weed blade	72511-VF9-B02	06631-VF9-D10 (for 9"/10" blades)
	4 tooth, 10" grass/weed blade	72511-VF9-B00AH	
	8 tooth, 10" weed/brush blade	72511-VF9-D00AH	
	80 tooth brush/wood blade	72511-VF9-D61	
HHT31	3 tooth, 10" grass/weed blade	72511-VF9-B02	06631-VH8-740 (for 9"/10" blades)
	4 tooth, 10" grass/weed blade	72511-VF9-B00AH	
	8 tooth, 10" weed/brush blade	72511-VF9-D00AH	
	80 tooth brush/wood blade	72511-VF9-D61	
HHT25	3 tooth, 9" grass/weed blade	72511-VF9-A02	06631-VH8-740 (for 9"/10" blades)
	4 tooth, 9" grass/weed blade	72511-VF9-A00AH	
	8 tooth, 9" weed/brush blade	72511-VF9-C00AH	
	24tooth, 9" weed/brush blade	72511-VF9-E00AH	

NOTE: A barrier kit must be installed when using a metal blade - (except UMK431UNBC and HHT31SUNBC).



06631-VF9-C10

A barrier kit includes two shields, one for 4/6/8 tooth blades, and the other for saw (30~80) tooth blades. This kit comes with the harness, barrier and all the hardware.



TRIMMER HEADS



SEMI-MATIC TRIMMER HEAD

72560-VH8-642AH

NOTE: Standard on HHT25/31SLTC models



MANUAL TRIMMER HEAD

72560-VF9-C12

NOTE: Standard on UMK422LNC, UMK431LNC/UNBC and HHT31SUNBC models

TRIMMERS



SEMI-PRO TRIMMER HEAD

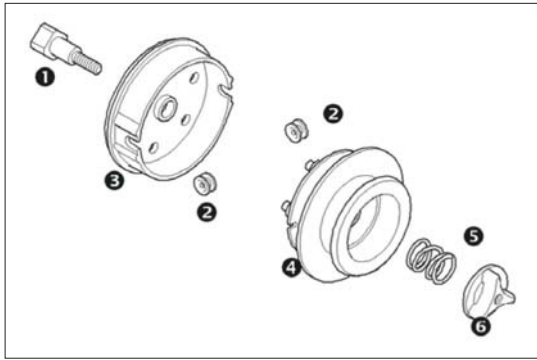
72560-VF9-C41

NOTE: standard on UMK422/431LTC models



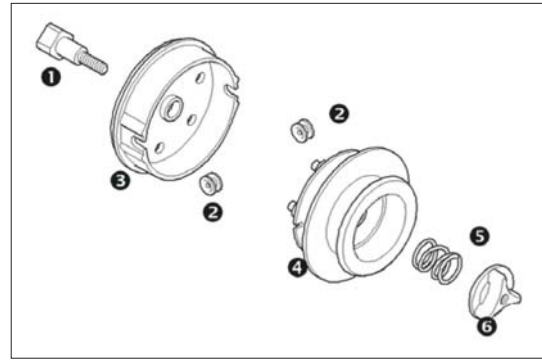
PRO-TAP TRIMMER HEAD

72560-VF9-C33AH



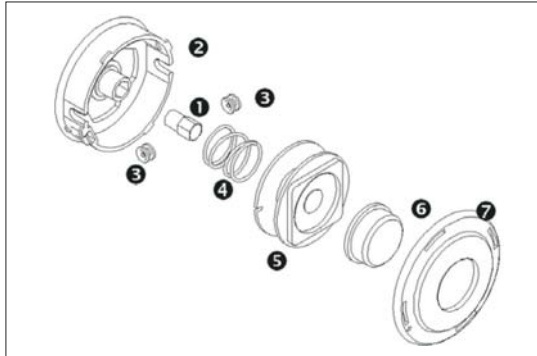
MANUAL TRIMMER HEAD

NO.	QTY.	Description	PN
1	1	Drive bolt	72561-VF9-C11
2	2	Eyelet	72562-VF9-C11
3	1	Housing	72566-VF9-C12
4	1	Spool	72563-VF9-C11
5	1	Tension spring	72564-VF9-C11
6	1	Tension knob	72565-VF9-C11



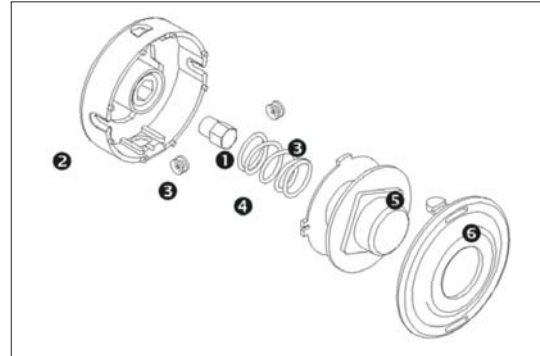
SEMI-MATIC TRIMMER HEAD

NO.	QTY.	Description	PN
1	1	Drive bolt	72561-VF9-C11
2	1	Housing	72562-VF9-C30AH
3	1	Spring	72563-VF9-C30AH
4	1	Washer	72564-VF9-C30AH
5	1	Outer drive	72565-VF9-C30AH
6	1	Inner cam	72566-VF9-C30AH
7	1	Spool only	72567-VF9-C30AH



SEMI-PRO TRIMMER HEAD

NO.	QTY.	Description	PN
1	1	Drive bolt	72561-VF9-C41
2	1	Housing	72562-VF9-C41
3	2	Eyelet	72562-VF9-C11
4	1	Spring	72564-VF9-C41
5	1	Spool only	72563-VF9-C41
6	1	Button	72565-VF9-C41
7	1	Cover	72566-VF9-c41



PRO-TAP TRIMMER HEAD

NO.	QTY.	Description	PN
1	1	Drive bolt	72561-VF9-C33AH
2	1	Housing	72562-VF9-C33AH
3	2	Eyelet	72562-VF9-C12
4	1	Spring	72563-VF9-C33AH
5	1	Spool only	72564-VF9-C33AH
6	1	Cover	72566-VF9-C33AH

TRIMMERS



72511-095-0285A



72511-095-0285B

TRIMMER LINE						
Size	Color	P/N	Pack Type	Length	WT	
.080	Bright Orange	72511-080-0200A	Card	200	8 oz.	
.080	Grass Green	72511-080-0200B	Card	200	8 oz.	
.080	Bright Orange	72511-080-0400A	Doughnut	400	1lb.	
.080	Grass Green	72511-080-0400B	Doughnut	400	1lb.	
.095	Bright Orange	72511-095-0285A	Doughnut	285	1lb.	
.095	Grass Green	72511-095-0285B	Doughnut	285	1lb.	
New! .095	Clear - Quiet	72512-095-0285Q	Doughnut	285	1lb.	
.105	Bright Orange	72511-105-0235A	Doughnut	235	1lb.	
.105	Grass Green	72511-105-0235B	Doughnut	235	1lb.	
.130	Bright Orange	72511-130-0150A	Doughnut	150	1lb.	
.130	Grass Green	72511-130-0150B	Doughnut	150	1lb.	
.155	Bright Orange	72511-155-0107A	Doughnut	107	1lb.	
.155	Grass Green	72511-155-0107B	Doughnut	107	1lb.	
.080	Bright Orange	72521-080-1200A	Spool	1200	3 lb.	
.080	Grass Green	72521-080-1200B	Spool	1200	3 lb.	
.095	Bright Orange	72521-095-0855A	Spool	855	3 lb.	
.095	Grass Green	72521-095-0855B	Spool	855	3 lb.	
New! .095	Clear - Quiet	72512-095-0855Q	Spool	855	3 lb.	
.105	Bright Orange	72521-105-0705A	Spool	705	3 lb.	
.105	Grass Green	72521-105-0705B	Spool	705	3 lb.	
.130	Bright Orange	72521-130-0450A	Spool	450	3 lb.	
.130	Grass Green	72521-130-0450B	Spool	450	3 lb.	
.155	Bright Orange	72521-155-0321A	Spool	321	3 lb.	
.155	Grass Green	72521-155-0321B	Spool	321	3 lb.	
.095	Bright Orange	72521-095-1425A	Lg. Spool	1425	5 lb.	
.095	Grass Green	72521-095-1425B	Lg. Spool	1425	5 lb.	
.105	Bright Orange	72521-105-1175A	Lg. Spool	1175	5 lb.	
.105	Grass Green	72521-105-1175B	Lg. Spool	1175	5 lb.	
.130	Bright Orange	72521-130-0750A	Spool	750	5 lb.	
.130	Grass Green	72521-130-0750B	Spool	750	5 lb.	
.155	Bright Orange	72521-155-0535A	Spool	535	5 lb.	
.155	Grass Green	72521-155-0535B	Spool	535	5 lb.	



HONDA BATTERY CHARGER

31670-BMS-000

As simple as 1-2-3: Just connect the Honda Battery Charger to your battery and the 5-stage program does the rest automatically and safely. Delivered with two interchangeable connection sets: clamps for bench charging and a weatherproof snap cord with protection fuse and eyelet terminals for permanent attachment to the battery.



HONDA TESTMATE MINI

CB67076

- Ultra Compact – Fast, Professional!
- Fast, accurate & professional on-vehicle testing of 12VDC batteries & charging systems.
- Weak batteries and charging system anomalies are identified in seconds.
- Test without disassembly: Fast, Clean, Easy!



HONDA OILS & CHEMICALS

Honda builds its Power Equipment to the toughest engineering standards in the world, formulating its Oils & Chemicals to those same high standards and thereby maintaining your Power Equipment at peak performance.

You bought a Honda because of its quality, performance and reliability. Why not match the finest product you can own with the finest Oils & Chemicals on the market. Don't settle for an imitation when you can buy the original.

Genuine Honda Oils & Chemicals are available exclusively at your local Honda Dealer.



5W-30 ENGINE OIL

CB66982

- Provides protection from corrosion and reduces engine wear
- Fights formation of sludge and other engine deposits
- Excellent low temperature fluidity eases cold starting
- Superior resistance from high temperature thermal breakdown

SIZE: 1 Litre

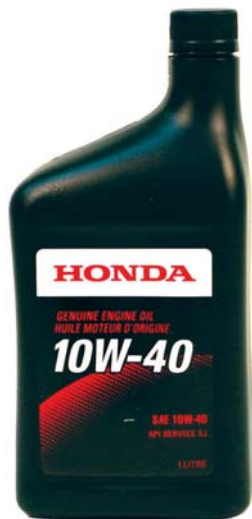


10W-30 ENGINE OIL

CB67010

- Provides protection from corrosion and reduces engine wear
- Fights formation of sludge and other engine deposits
- Excellent low temperature fluidity eases cold starting
- Superior resistance from high temperature thermal breakdown

SIZE: 1 Litre



10W-40 ENGINE OIL

CB66947

- Provides protection from corrosion and reduces engine wear
- Fights formation of sludge and other engine deposits
- Excellent low temperature fluidity eases cold starting
- Superior resistance from high temperature thermal breakdown

SIZE: 1 Litre



ENGINE DEGREASER

CA66913

- Heavy-duty cleaner that cuts through tough oil and grease build up on exterior engine surfaces
- Can also be used on industrial equipment, lawn and garden equipment and marine equipment

SIZE: 380 g

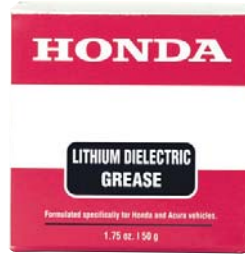


FUEL STABILIZER

CA66926

- Prevents the formation of fuel gum and varnish throughout the entire fuel system
- Absorbs moisture to protect against fuel system corrosion
- Ensures quick start-ups after storage

SIZE: 500 ml



LITHIUM DIELECTRIC GREASE

08798-9001

White grease used to pack electrical connectors for moisture and corrosion protection

SIZE: 50 g



SAE 80W90 HYPOID GEAR OIL

CA66928

- Recommended for use in manual transmissions, steering gears and differentials where API GL-% lubricant is specified
- Contains extreme-pressure additives ensuring full gear protection.
- Offers excellent performance in applications calling for API GL-4 and GL-3 products.

SIZE: 1 Litre

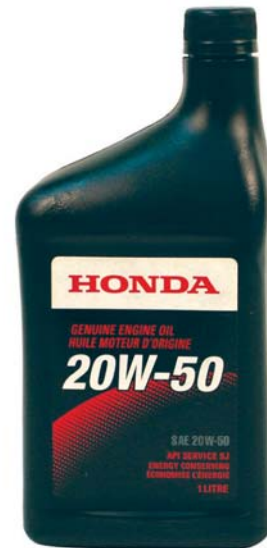


HYDROSTATIC FLUID

CB66985

Designed specifically for Honda hydrostatic transmissions. Provides maximum transfer of power and maximum efficiency.

SIZE: 1 Litre



20W-50 ENGINE OIL

CB66948

- Provides protection from corrosion and reduces engine wear
- Fights formation of sludge and other engine deposits
- Excellent low temperature fluidity eases cold starting
- Superior resistance from high temperature thermal breakdown

SIZE: 1 Litre



RUST PENETRANT

CA66914

- General purpose lubricant and penetrant
- Lubricates parts that are tight and binding, repels moisture from surfaces
- Penetrates and helps loosen rusted fasteners
- Leaves a thin lubricating film that protects against wear and corrosion

SIZE: 340 g



IGNITION MOISTURE SPRAY

CA66915

- Can be applied to wet components to repel moisture
- Safeguards against moisture build-up due to condensation
- Apply to ignition components including spark plug wires, distributor caps and ignition coils

SIZE: 175 g



WHITE LITHIUM GREASE

CA66920

- Special solvents allow for deep penetration
- Sets up quickly to a thick coating
- Protects against moisture and corrosion
- Use on metal hinges, pivots and sliding mechanisms

SIZE: 300 g



CARBURETOR CLEANER

CA66916

- For on- and off-vehicle carburetor repair
- Quickly penetrates and dissolves varnish, gum and carbon buildup
- Cleans jets, throttle valves and choke linkage
- 100% free of chlorinated solvents
- Oxygen sensor & catalytic converter safe
- Does not contain lead, silicone or phosphorus

SIZE: 385 g